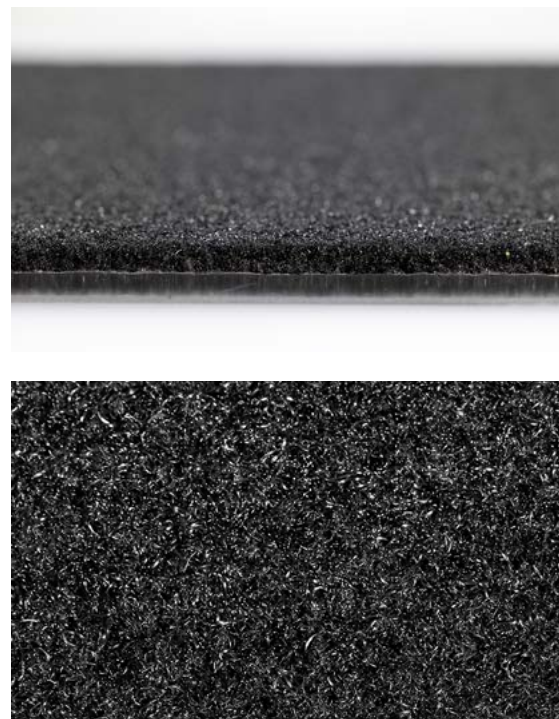


EASY CARE DUET



Dirt-trapping brush mat for industrial use with heavy foot traffic,
made of ECONYL® - a recycled polyamide.



Sizes:

60 cm × 90 cm

90 cm × 150 cm

135 cm × max. 20 m

200 cm × max. 20 m

Thickness: 9,0 mm

Weight: 3,05 kg/m²

Surface:

closed

Material:

polyamide (89 % ECONYL®)
on polyurethane backing

Fire behavior:

Cfl-s1 (EN 13501)

Slip resistance:

DS according to EN 13893

Application

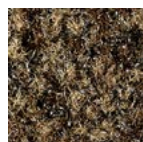
- suitable as heavy-duty mat without outdoor mat
- entrance areas, staircases, storage rooms, elevators, commercial buildings, medium-sized offices, open-plan offices, ...

Characteristics

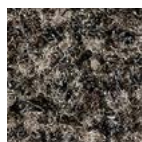
- dirt-trapping brush mat – a combination of soft and hard yarns
- cut pile with high water-absorption capacity (5,6 l per square metre)
- five shades of grey – to match granite floors, asphalt, pebbles, cement and concrete slabs
- circumferential edge of 2,5 cm
- wear-resistant and durable backing made of polyurethane, free from PVC, chlorides and plasticizers
- made of ECONYL® – each square metre of entrance mat with recycled instead of pure nylon saves more than 5 kg of CO₂ equivalent

Cleaning Instructions

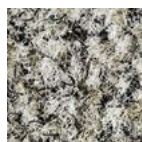
Can be quickly cleaned with a vacuum cleaner or by just shaking the mat.



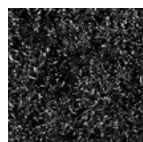
chocolate
brown



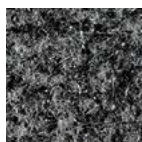
gray brown



quartz gray



traffic black



black gray