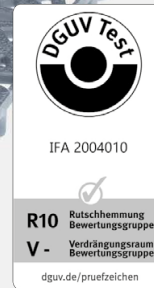
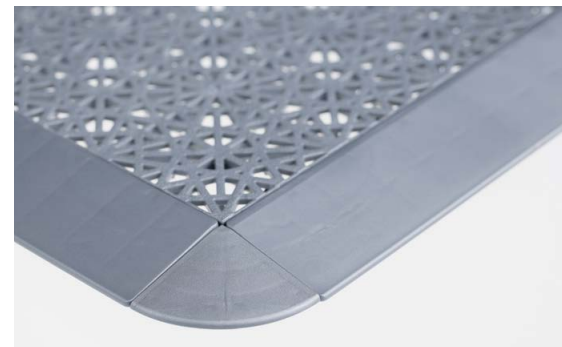
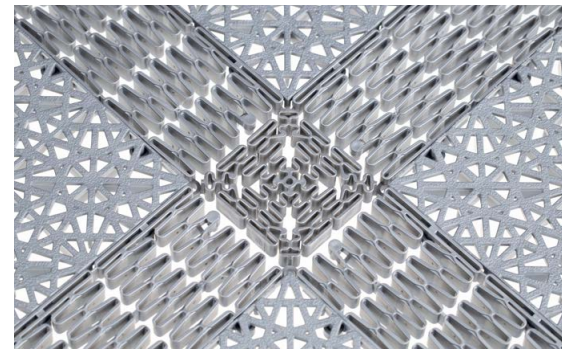
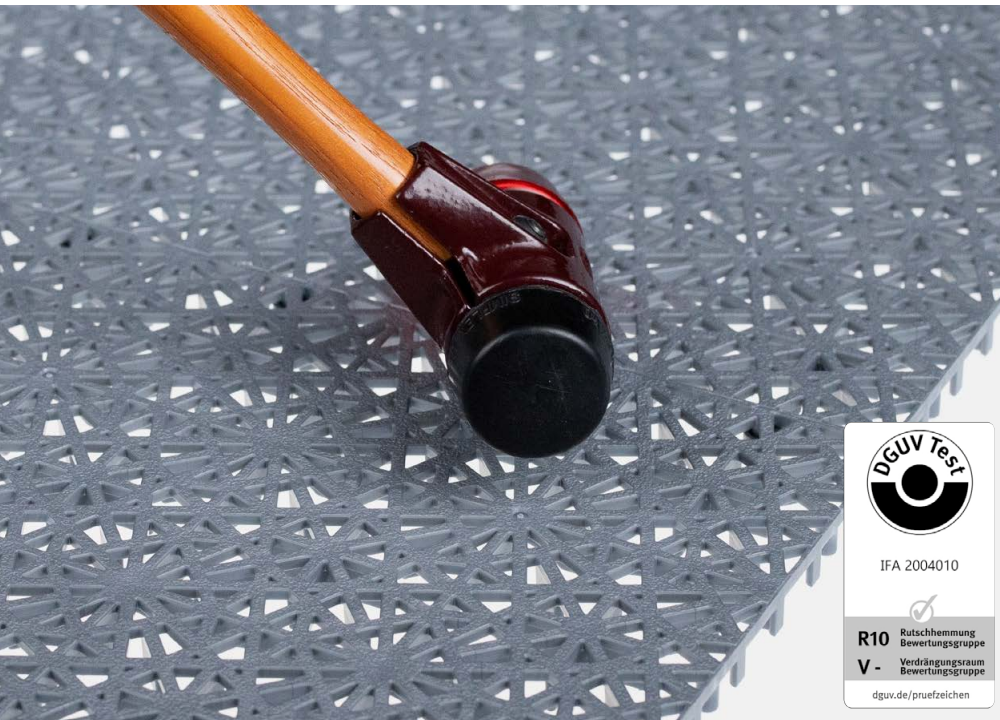


YOGA EASY EVENT



The square tiles with star-shaped structure can be assembled quickly and easily to large areas – ideal for fairs.



Sizes:

30 cm × 30 cm (tile)

Thickness: 14 mm

Weight: 3 kg / m²

Surface:

grid-like structure, perforated

Material:

polypropylene (PP)

Fire behavior:

CE EN 14041

Slip resistance:

good / R10 (DIN 51130)

Accessories:

edging strips,
expansion strips, corners,
disassembly tool

Characteristics

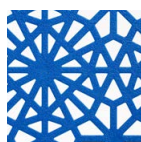
- covering large areas (outside and inside). For wet and dry areas
- resistant to UV light, oil, petrol and most chemicals (please request a test sample)
- temperature-resistant (–18 °C to +60 °C)
- in combination with corners and edging strips, the flooring is fully passable and resists loads up to 220 t / m²
- good drainage and ventilation
- beveled edges on all sides reduce trip hazards
- easily adapts to the ground – also on an uneven floor
- environmentally friendly and 100 % recyclable
- representative design combined with easy handling

Cleaning Instructions

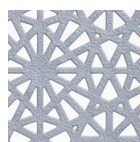
For quick cleaning simply vacuum, sweep it off with a broom or hose it down with water.

Installation

Simple installation – without screws, nails or glues.



blue



gray

YOGA EASY EVENT



Assembly Instructions

First store the individual tiles in the respective room for a few hours, where you need to install the tiles in order to adjust the temperature.

The installation requires a rubber or plastic hammer, as well as a folding rule/measuring tape or possibly a jigsaw/a splitting tool.

The individual tile connections are joined together with a hammer blow. To do this, angle the panels from one corner, the smooth surface to the wall. We recommend a distance of approx. 20 mm between tile and the wall. An ideal adaptation to the respective laying area can be achieved with a jigsaw. The saw blade should be able to cut plastic, so that precise and clean cuts can be achieved.

For proper disassembly, we offer a disassembly tool, a tile divider, which allows the panels to be separated from each other gently and without great effort.