

# YOGA DOME BASIC



This sustainable mat with dome nubs is ideal for dry working areas. The modular system YOGA DOME BASIC allows installation over long areas and corners.



## Sizes:

90 cm × 90 cm (corner element)  
90 cm × 120 cm (end piece)  
90 cm × 120 cm (center piece)

single mat:

60 cm × 90 cm  
90 cm × 120 cm

**Thickness:** 13 mm

**Weight:** 10,4 kg/m<sup>2</sup>

**Hardness:** 55° ±5 Shore A

## Surface:

dome nubs, closed

## Material:

natural rubber

## Slip resistance:

normal / R9 (DIN EN 16165)

## Displacement space:

V10 (DIN 51133)

## Characteristics

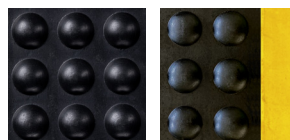
- available as single mat or modular system: center piece, end pieces and corner elements are plugged together, so that the length can be extended as required (also L-shape or U-shape)
- the mat absorbs noise and reduces the impact sound level in areas of use
- provides excellent insulations against cold floors
- beveled edges on all sides reduce trip hazards
- very ergonomic due to the dome nubs on the surface
- quick assembly and disassembly
- ideal for use in the industry sector and at assembly lines
- available in two versions: black or black with yellow stripes for better hallway markings and therefore more safety at the workplace

## Cleaning Instructions

High pressure cleaner or industrial dry vacuum cleaner are ideal for an accurate cleaning. For a simple and quick cleaning you can also wash it down with water or simply sweep it off.

## Installation

The center pieces/corner elements/end pieces are dovetailed on two sides. Due to that they can be easily put together and expanded. Fixing or gluing is not necessary.



black

black with  
yellow stripes