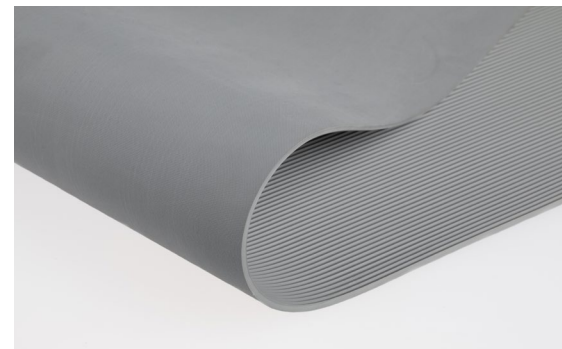
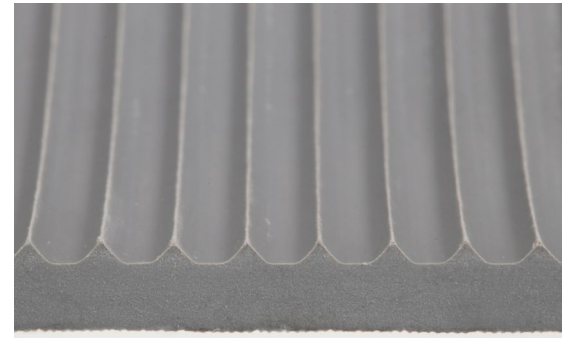


# YOGA LINE ISO



Excellent protection from grounding while working with electricity. Ideal for dry working areas, can be used as runners in workplaces with high frequency or as table mat.



## Sizes:

100 cm x max. 10 m

**Thickness:** 4,5 mm

**Weight:** 7 kg/m<sup>2</sup>

## Surface:

pyramid-narrow grooves, closed

## Material:

styrene-butadiene-rubber (SBR)

**Hardness:** 65° ±5 shore A

## Dielectric strength:

DIN EN 60243-1 (VDE 0303)

## Working voltage range:

36.000 Volt

## Test voltage:

50.000 Volt

## Characteristics

- resistant to UV-rays
- resistant to most alkalis and acids
- fully dyed mat. Consists of 100% rubber
- acts noise-insulating
- structured surface, slip resistant back
- withstands mechanical stress
- YOGA LINE ISO is tested by VDE (institute for testing and certification, Offenbach)

## Cleaning Instructions

Dry vacuum cleaner are ideal for an accurate cleaning. For a simple and quick cleaning you can simply sweep it off.

## Installation

Aids, which are needed for laying: box cutter, meter rod/measuring tape (only if you need to adjust it). Fixing or gluing is not necessary.



gray